



Directions

From the South: Take Rt. 93N to exit 4. At the lights, take a right onto Rt. 102. Follow Rt. 102 for approximately 1 mile. Turn left onto Crystal Ave (Rt. 28). Follow Rt. 28 for approximately 0.8 mile, then turn right onto Tsienneto Road. Overlook Medical Park is on the left.

From the North: Take Rt. 93S to exit 5. At the end of the ramp, turn left onto Rockingham Rd./Rt. 28. Follow Rt. 28 for approximately 3.1 miles. Turn left onto Tsienneto Road. Overlook Medical Park is on the left.

Free, convenient parking is available, and office is handicapped accessible.



State of the Art Imaging

Derry Imaging offers 100% digital imaging including:

- Digital Mammography
- MRI including open magnet
- Breast MRI
- 3d/4d ultrasound
- CT Scan
- X-Ray
- Bone Densitometry
- Peripheral Vascular Testing

We offer extended appointment hours including: Monday-Thursday 8am-8pm; Friday 8am-5:30pm; and Saturday 8am-noon.

To schedule an appointment, call **(603) 537-1363**. To schedule an appointment for CT or MRI exams, call **(603) 537-1378**.

Your appointment is scheduled for:

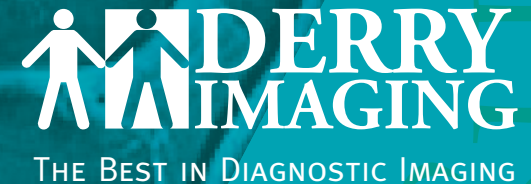
Day: _____

Date: _____

Time: _____ am/pm



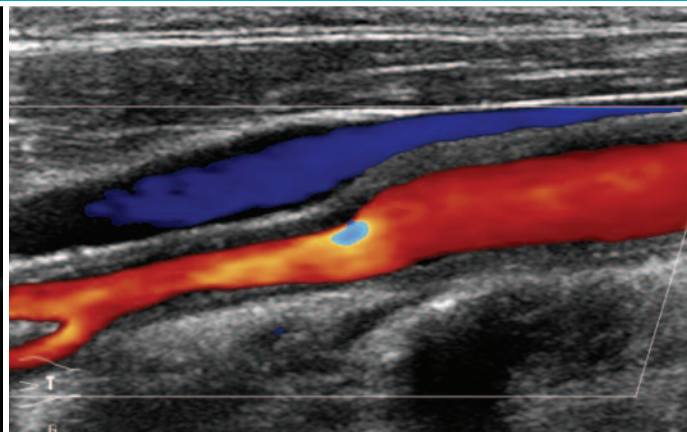
Overlook Medical Park
6 Tsienneto Road
Derry, New Hampshire 03038
(603) 537-1363 (Q:1K/0509)
www.DerryImaging.com





derry imaging

THE BEST IN DIAGNOSTIC IMAGING
BECAUSE IMAGE MATTERS



The Best in Diagnostic Imaging

Derry Imaging at Overlook Medical Park is the best choice for patients who need comprehensive diagnostic imaging services.

We are a state of the art facility accredited by the American College of Radiology.

Our on-site Board Certified radiologists provide exceptional service and prompt, clear communication with referring physicians. Our technologists are registered and credentialed, and many hold specialty certifications. We take pride in our team of highly trained and dedicated staff members.

State of the Art Technology

Derry Imaging heavily invests its time, energy and resources into providing its patients with the most advanced technology and processes available today.

- Our 100% digital systems maximize image resolution quality and decrease exam time.
- Our Picture Archiving and communications System (PACS) enables our doctors to securely store and retrieve images.
- Patients and physicians can have immediate viewing access to images for review and collaboration.

Exceptional Care and Service

Derry imaging offers competitive pricing as well as uncompromising diagnostic quality. Our patients enjoy quick & efficient service.

- Our location at Overlook Medical Park features a warm and comfortable professional setting
- Scheduling is much easier and wait times shorter compared to hospitals
- Tests can often be scheduled and completed within the same day
- Evening and Saturday appointments are available
- Walk in X-Rays
- Most insurance plans accepted